



Passwordstate

## Installation Instructions for SQL Server 2017 Express

# Table of Contents

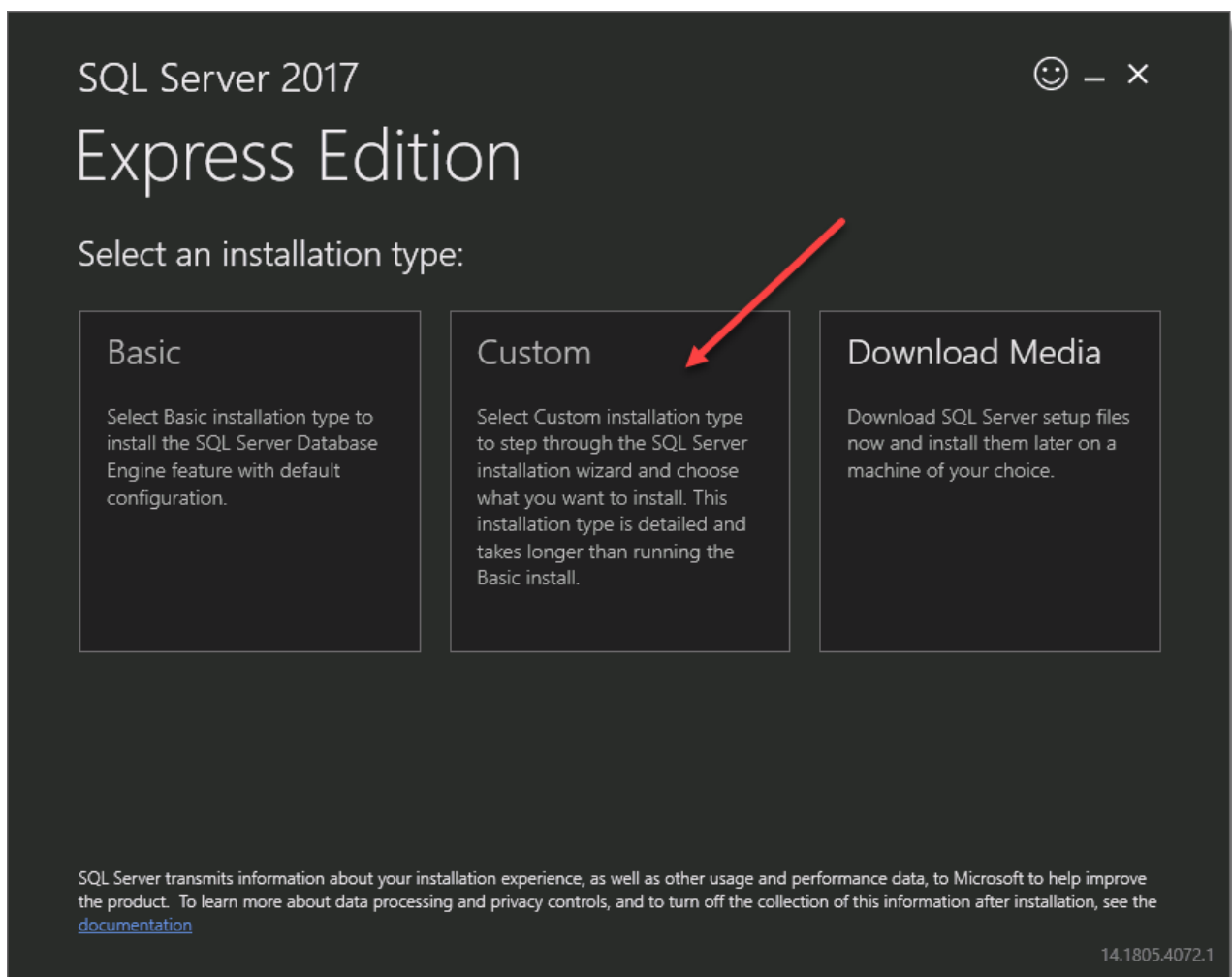
<b>1</b>	<b>SQL SERVER 2016 EXPRESS INSTALL .....</b>	<b>3</b>
<b>2</b>	<b>SQL SERVER EXPRESS CONSIDERATIONS .....</b>	<b>23</b>

## 1 SQL Server 2017 Express Install

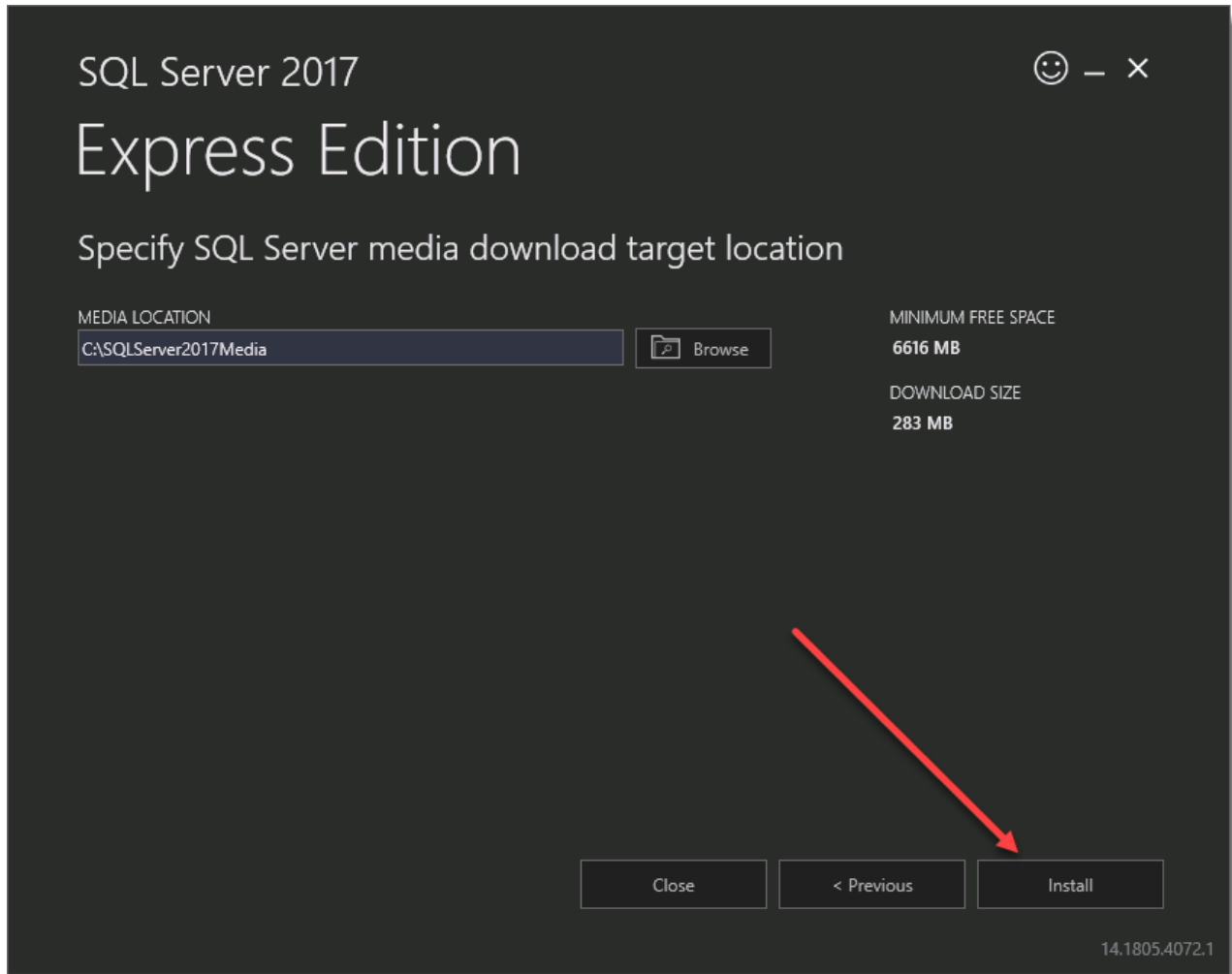
- Ensure the server you intend to install SQL Express 2017 has access to the internet. Part of this installation process requires SQL to download some source files automatically. If you don't have internet access, you can run this same installer on another machine that does, but choose the "Download Media" link in the first screenshot below. You can then transfer the full source files to your database server and perform the install manually.
- If you haven't done so already, please download SQL Server 2017 express installer from the following link - <https://www.microsoft.com/en-au/sql-server/sql-server-editions-express>

### Installation Instructions

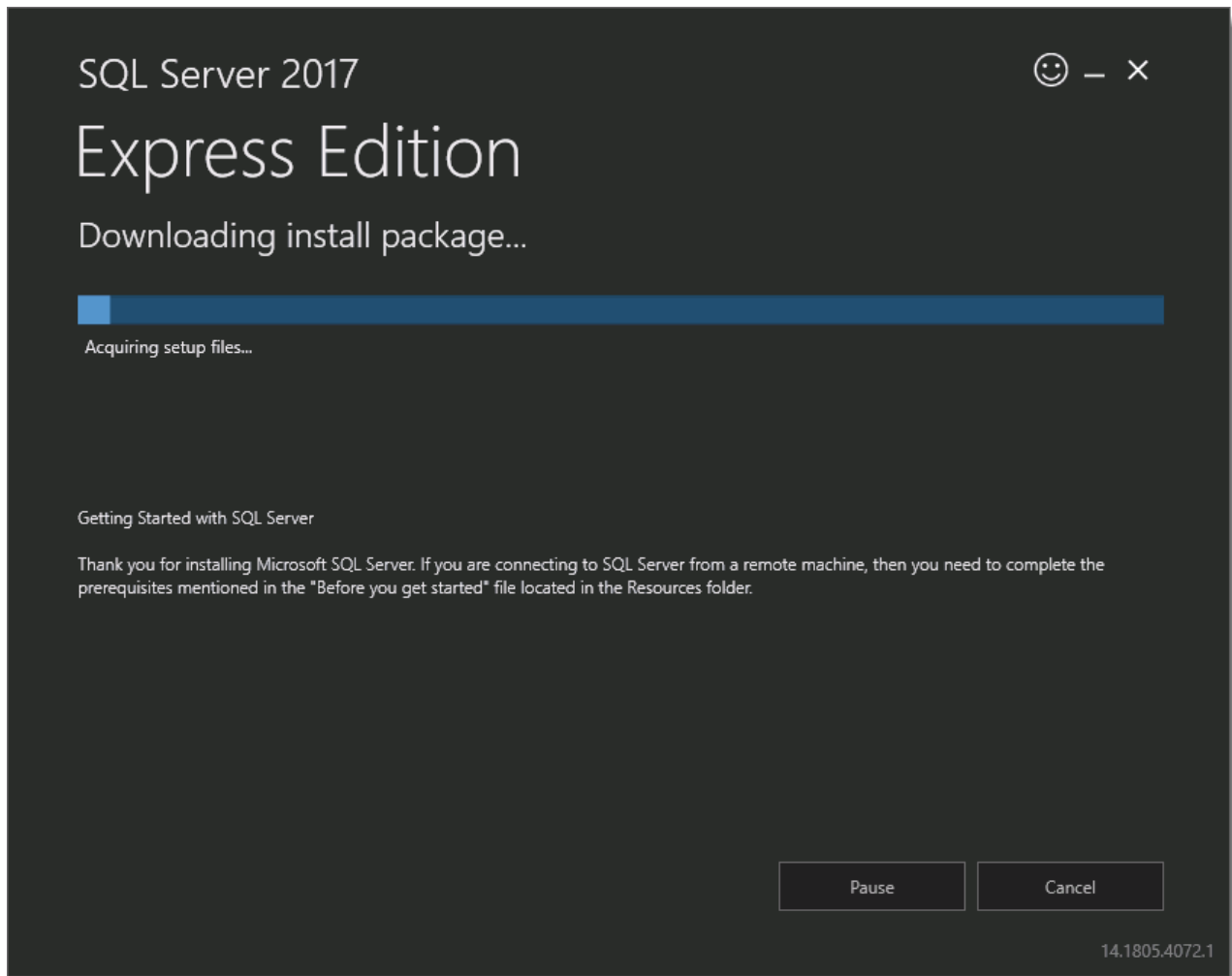
- Run the SQLServer2017-SSEI-Expr.exe
- At the 'Installation type' screen, select 'Custom'



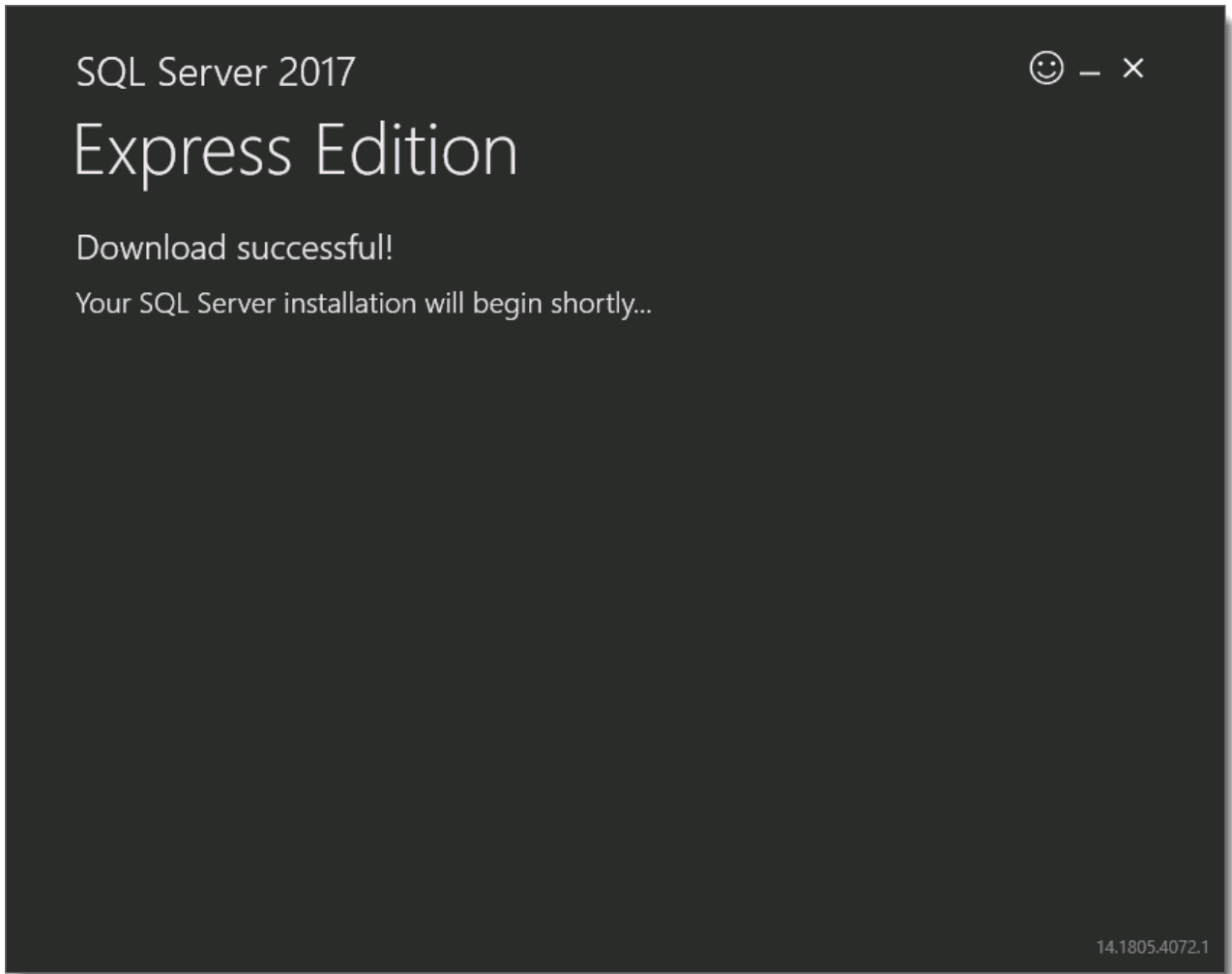
- Choose a location where the SQL 2017 Source files will download to, and click Install:



- The installer will now download the necessary source files:

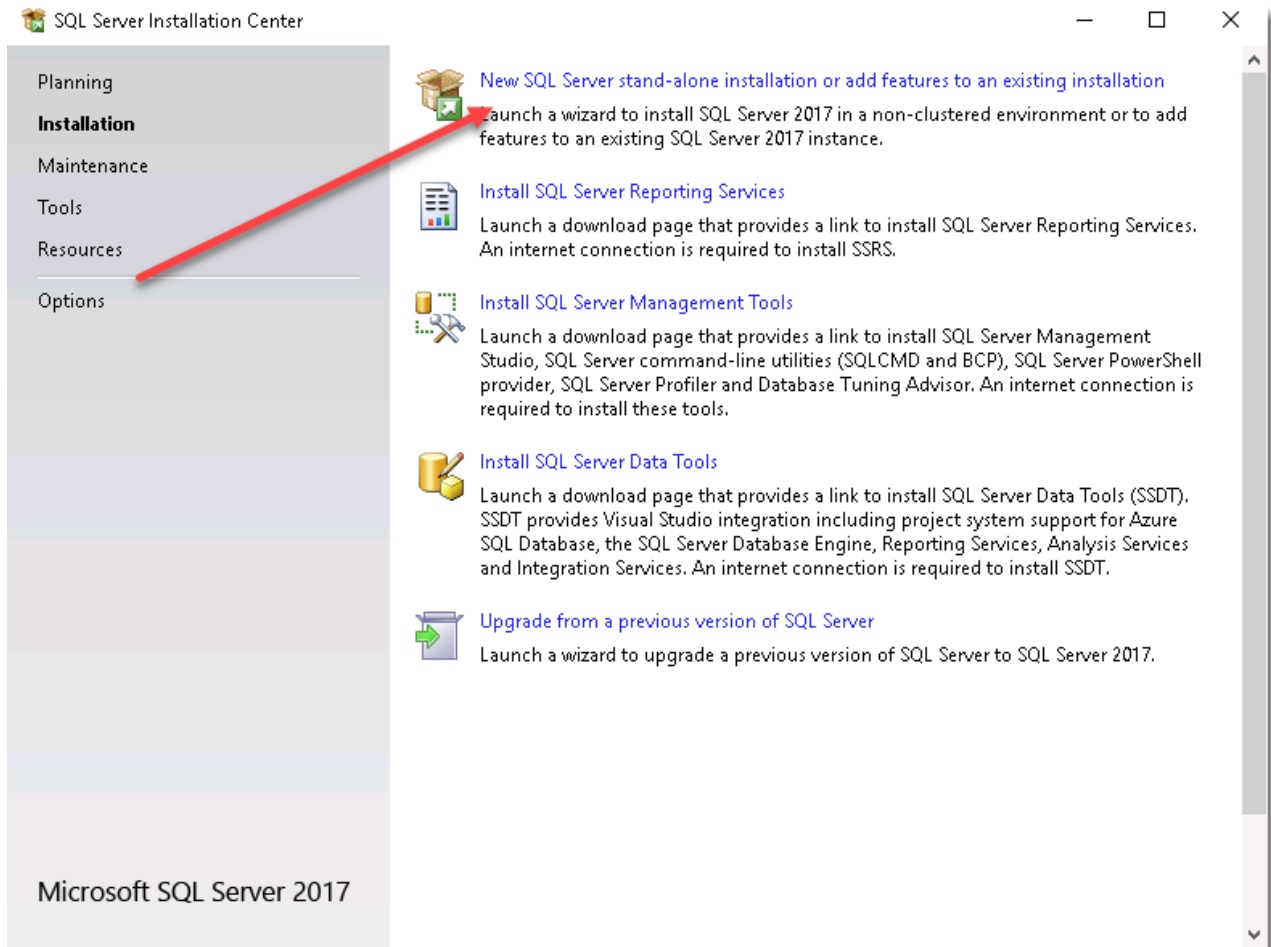


- You'll be notified when the download has finished

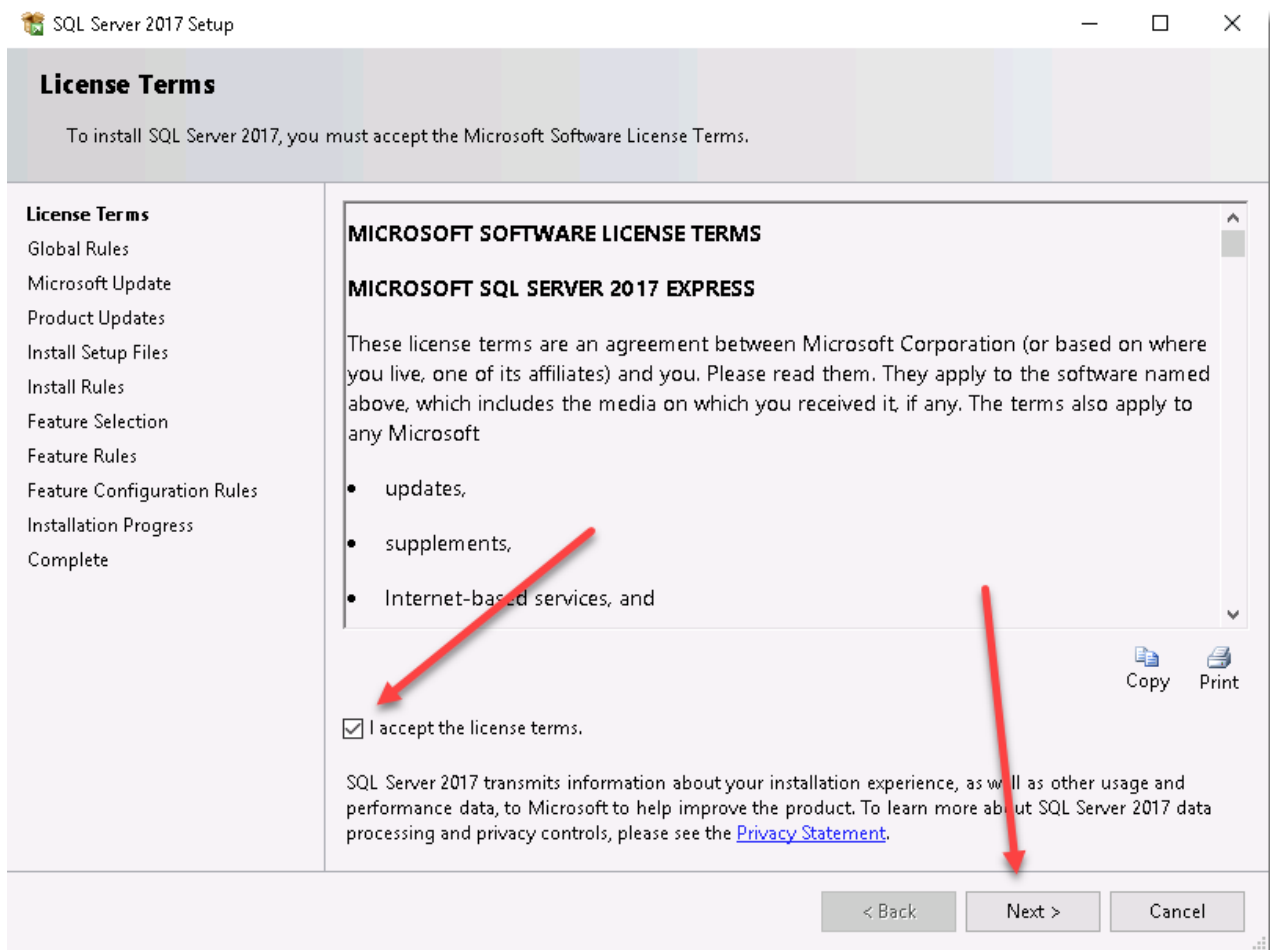


## Click Studios

- At the Installation Screen, select the “New SQL Server stand-alone installation or add features to an existing installation”

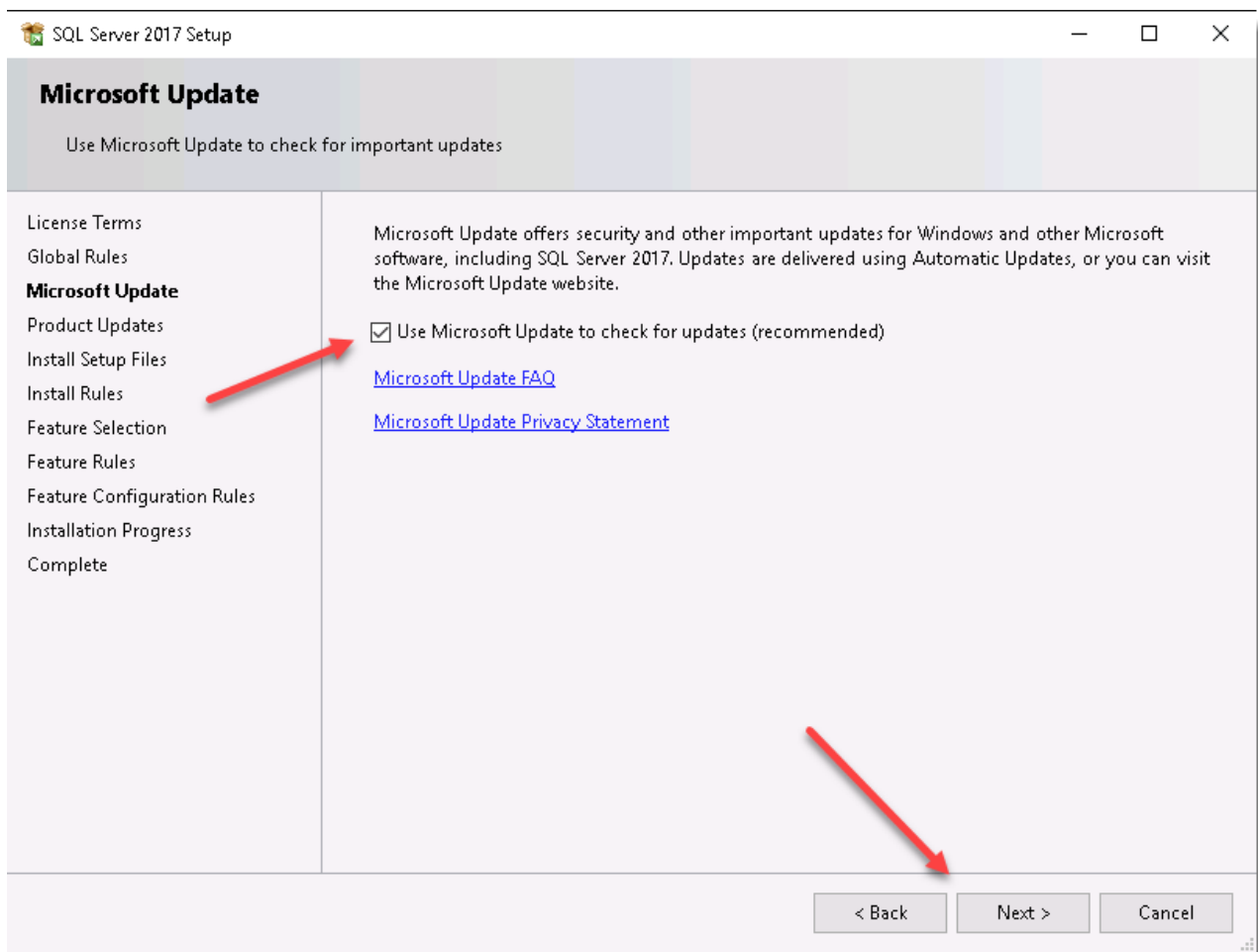


- At the License Terms screen, Accept the Terms and click Next

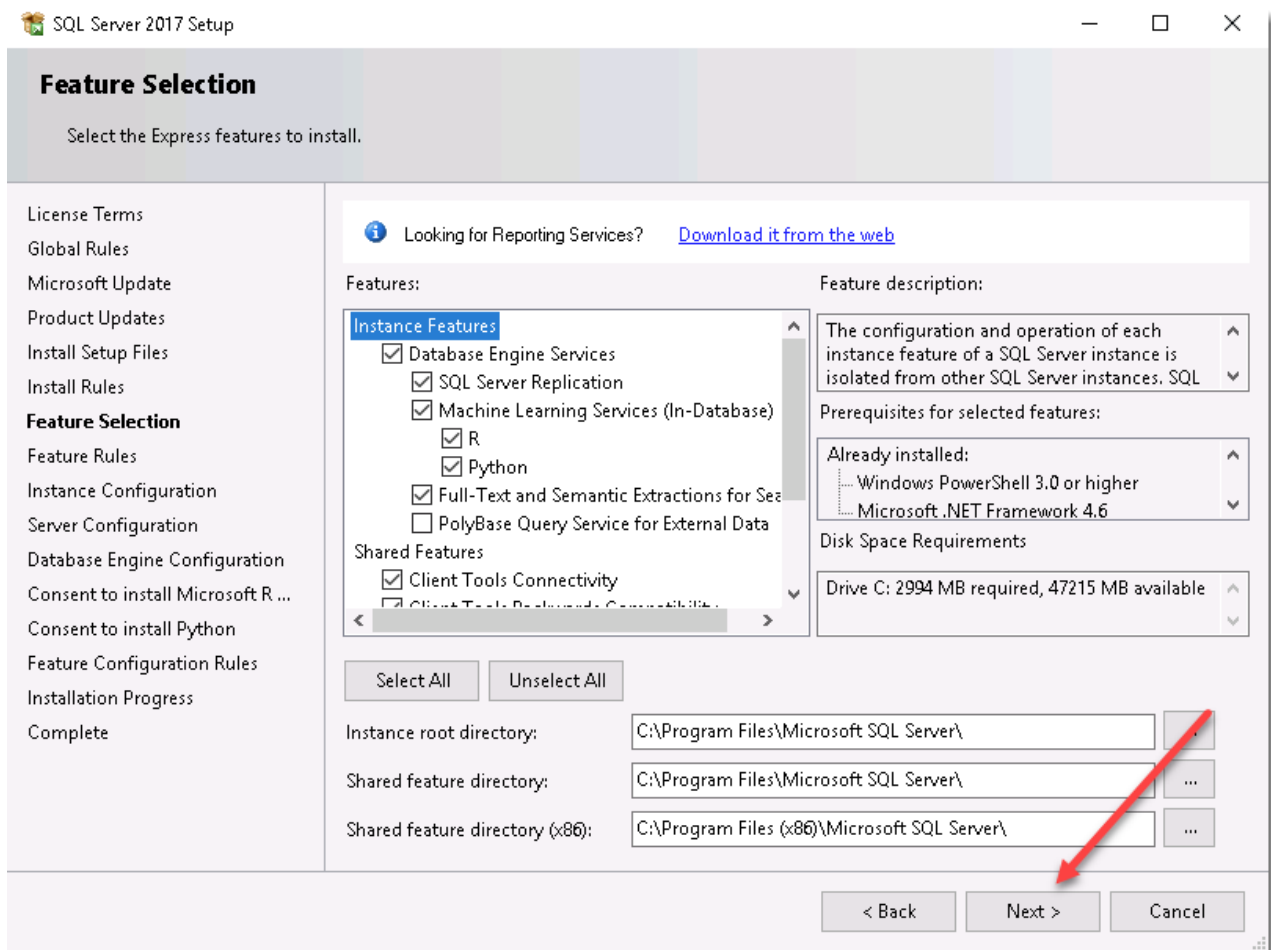


- At the Microsoft Update screen, select automatic updates if you require and click Next

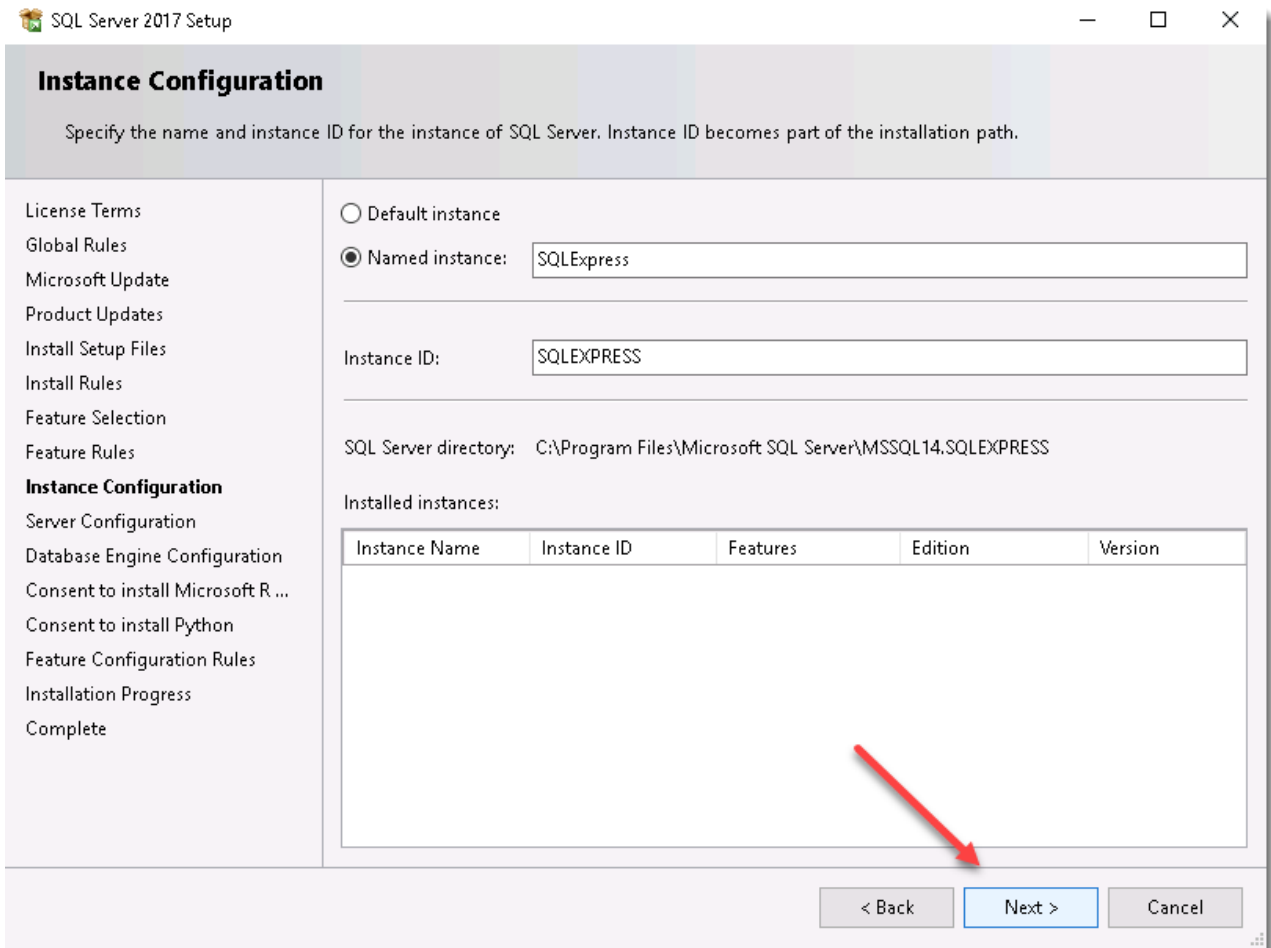




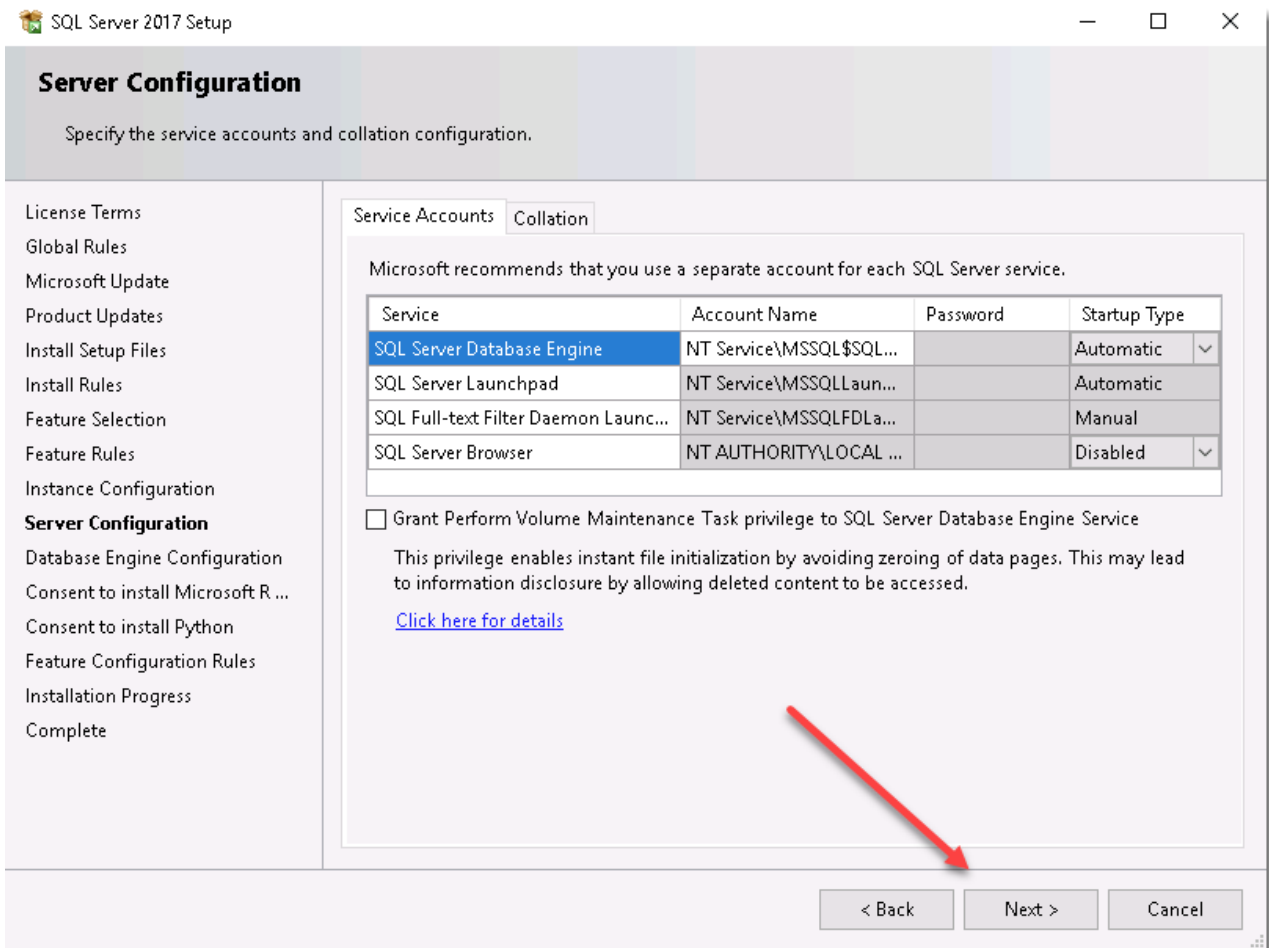
- At the 'Feature Selection' screen, accept the default checked options then click on the 'Next' button



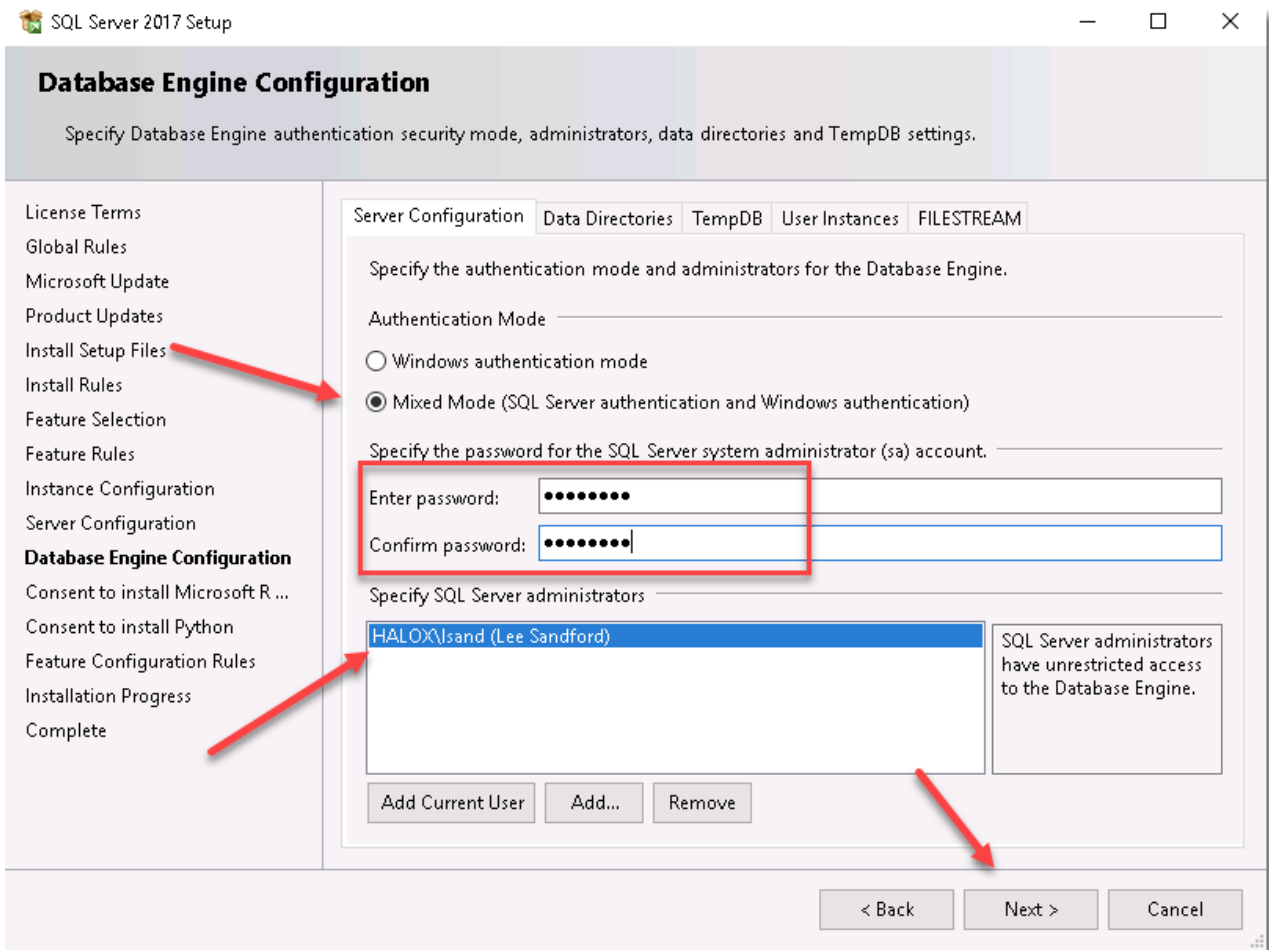
- At the 'Instance Configuration' screen, accept the default settings and click on the 'Next' button



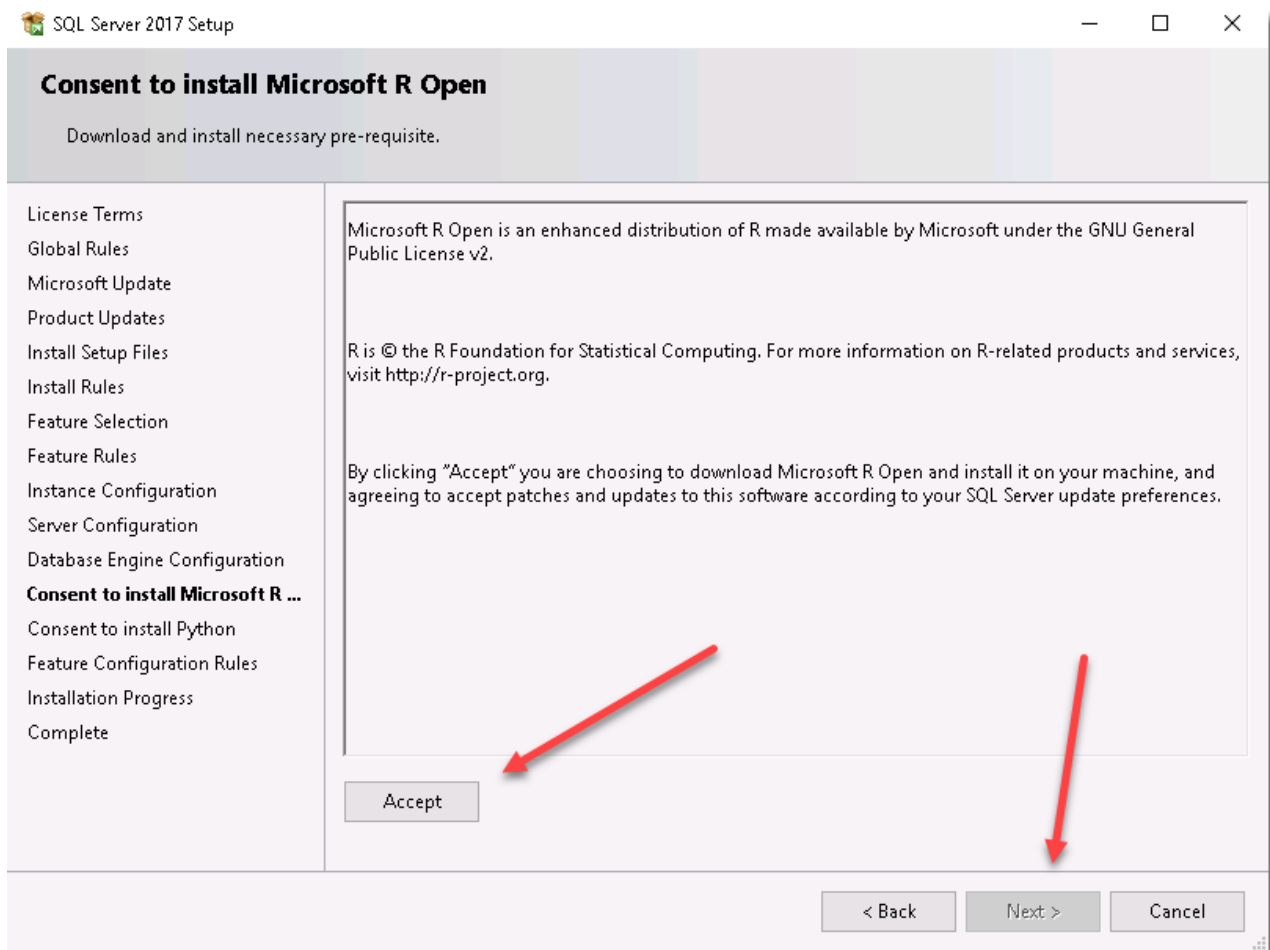
- At the 'Server Configuration' screen, accept the default settings and click on the 'Next' button



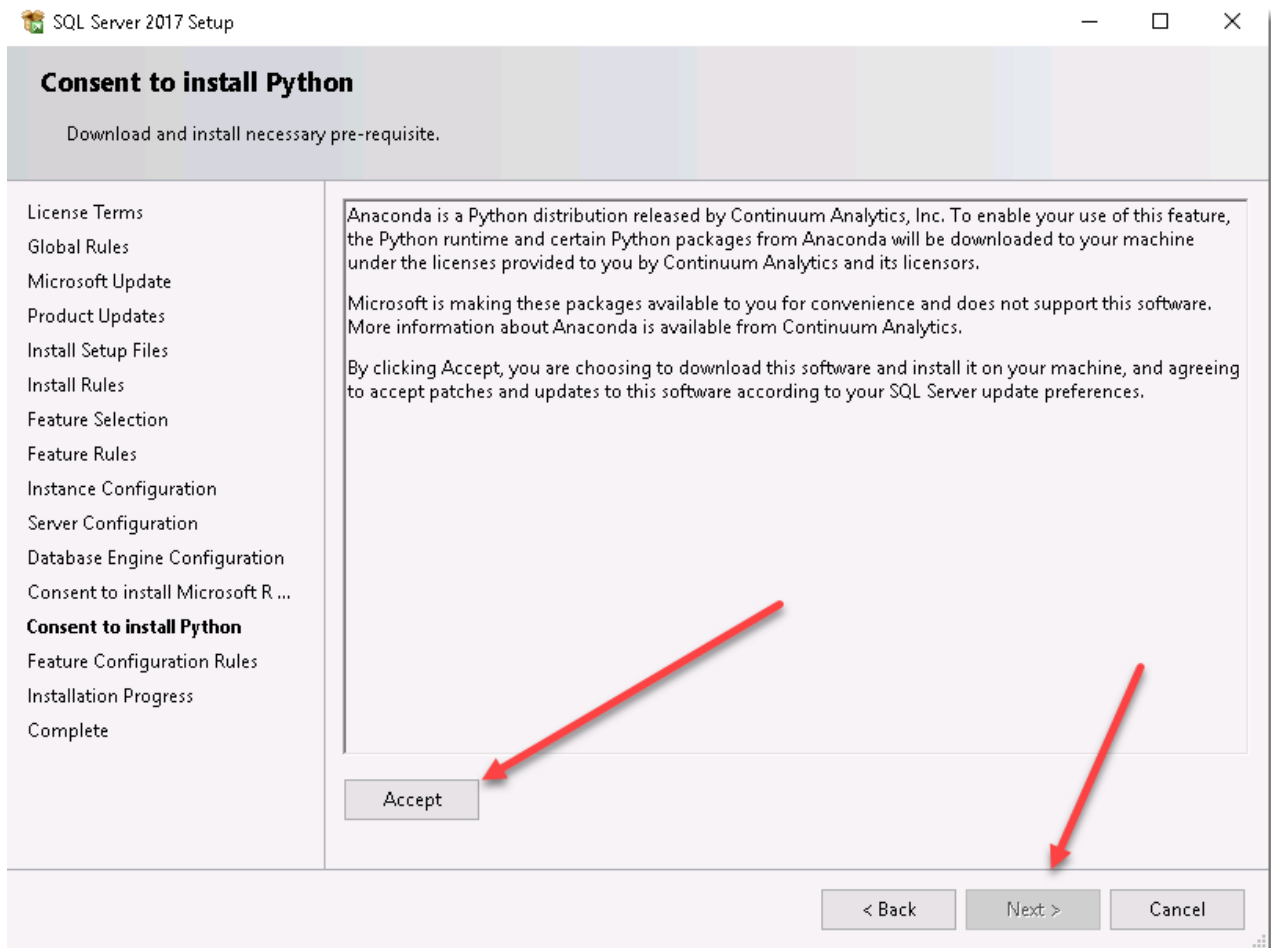
- At the 'Database Engine Configuration' screen, check 'Mixed Mode' authentication, specify a strong password for the 'sa' account. The 'Server Administrator' account is a local SQL account with full permissions to administer your databases and settings within SQL. Your own Active Directory account will also be added in here with full permissions, and if desired you can add more Active Directory accounts on this screen. You should now click on the 'Next' button



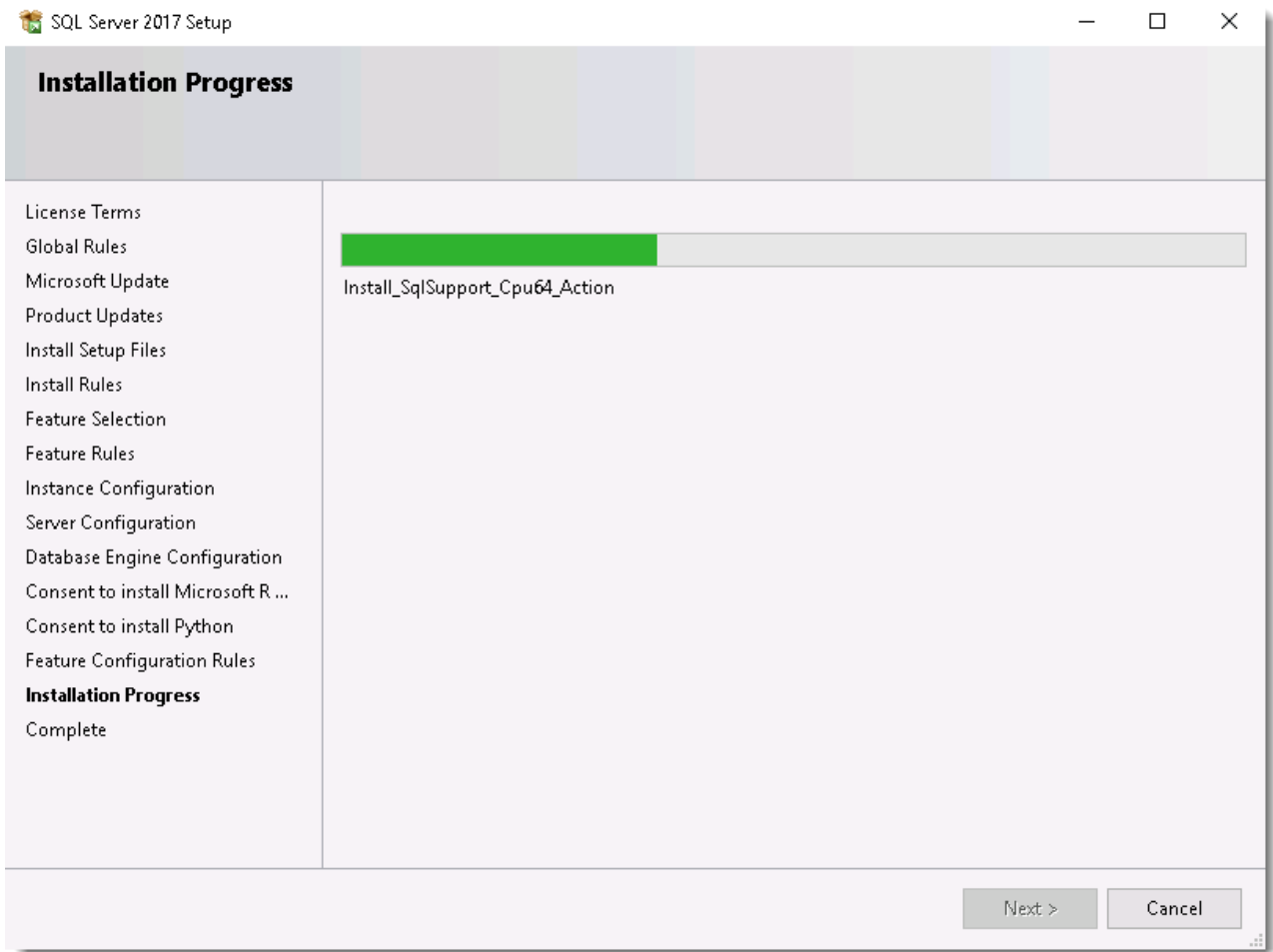
- Click Accept to install Microsoft R Open and then click Next



- Click Accept to install Python, and click Next

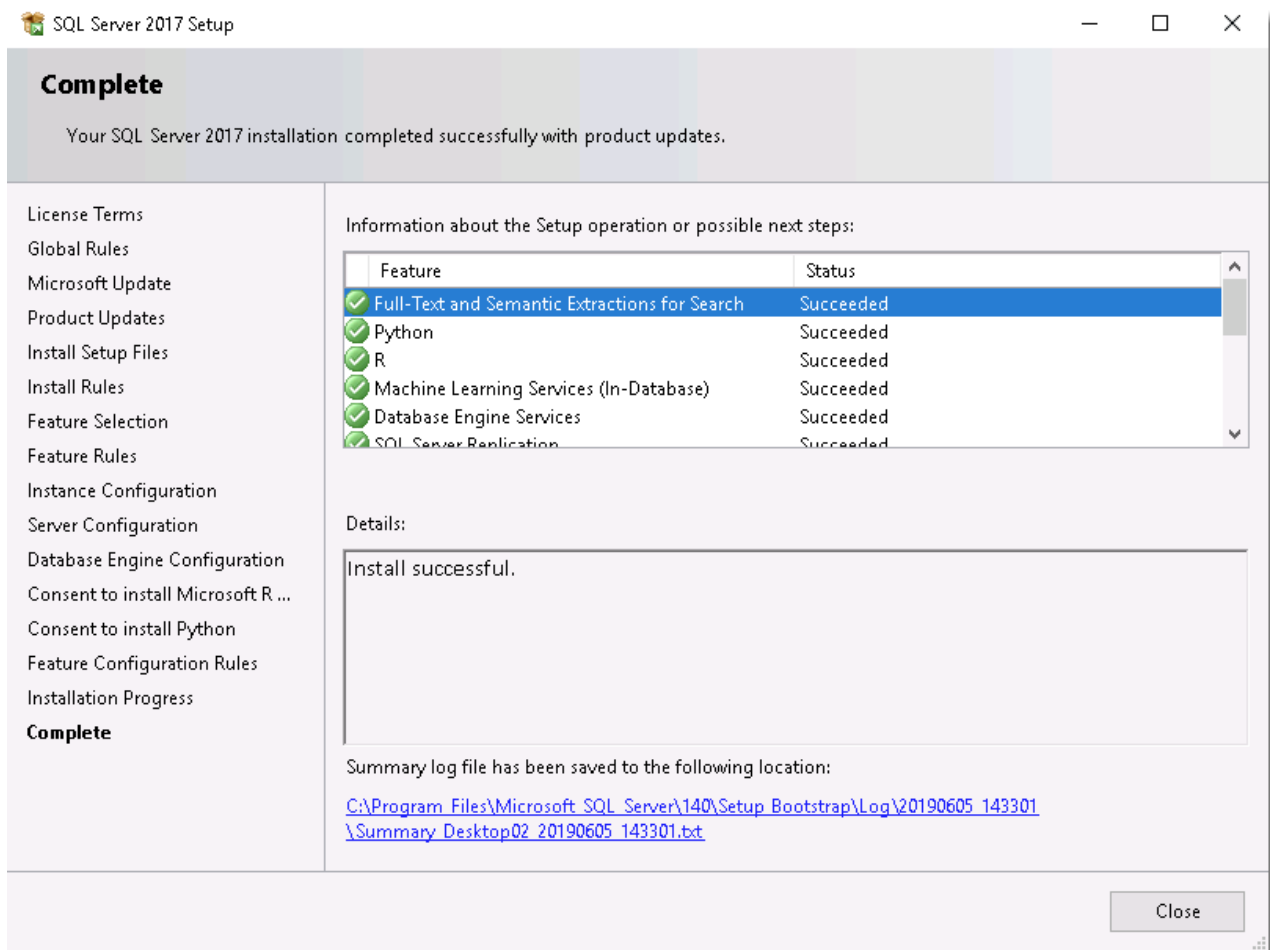


- SQL Express will now begin installing



- SQL Server Express is now installed and you can close to complete the install

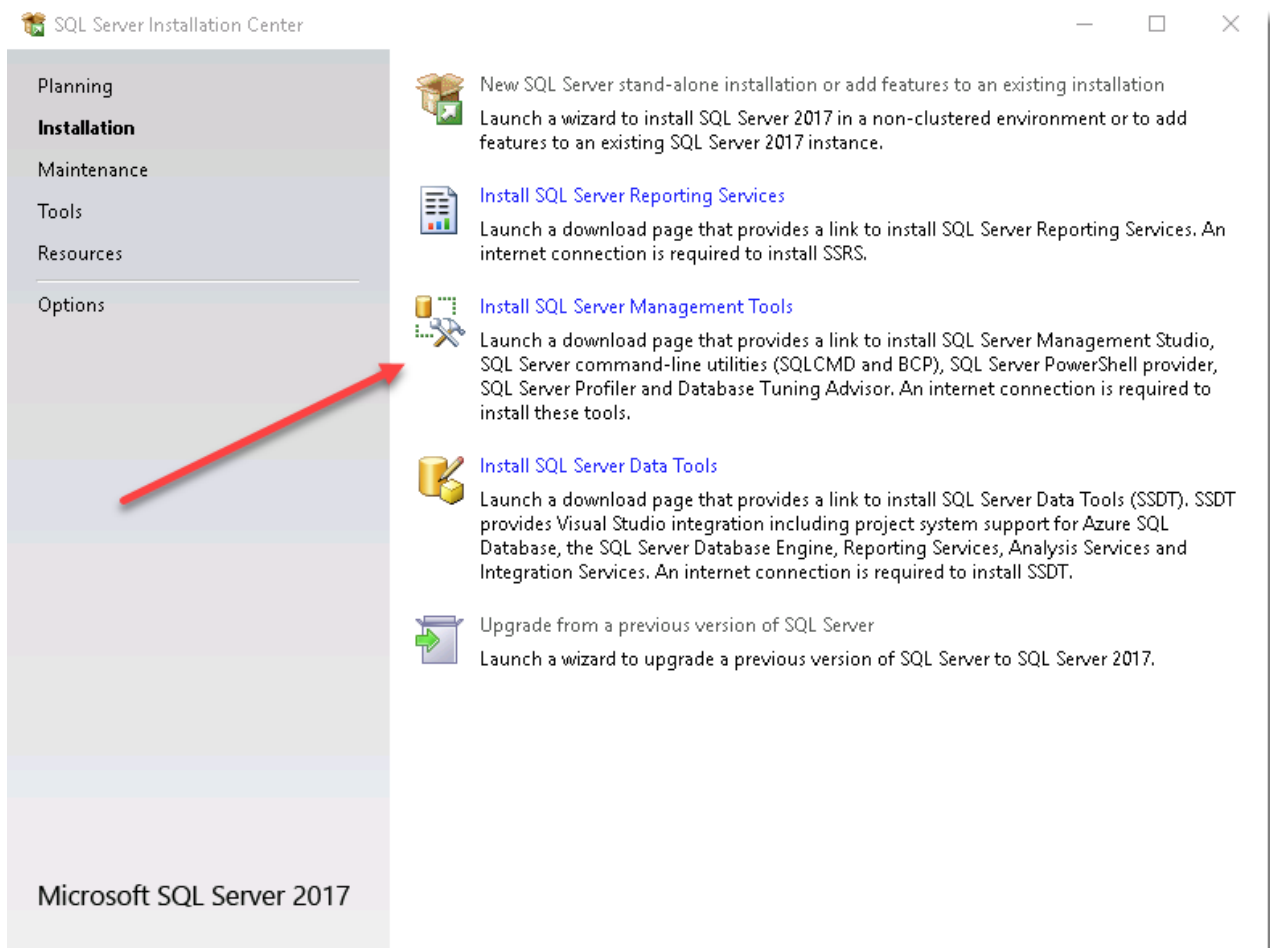




## Installing the SQL Server Management Tools

- On the Installation screen run the Install SQL Server Management Studio Tools (If you need to launch the installer again, you can run setup.exe from C:\SQLServer2017Media\ExpressAdv\_ENU – or wherever you specified to download the source files to earlier in this guide)

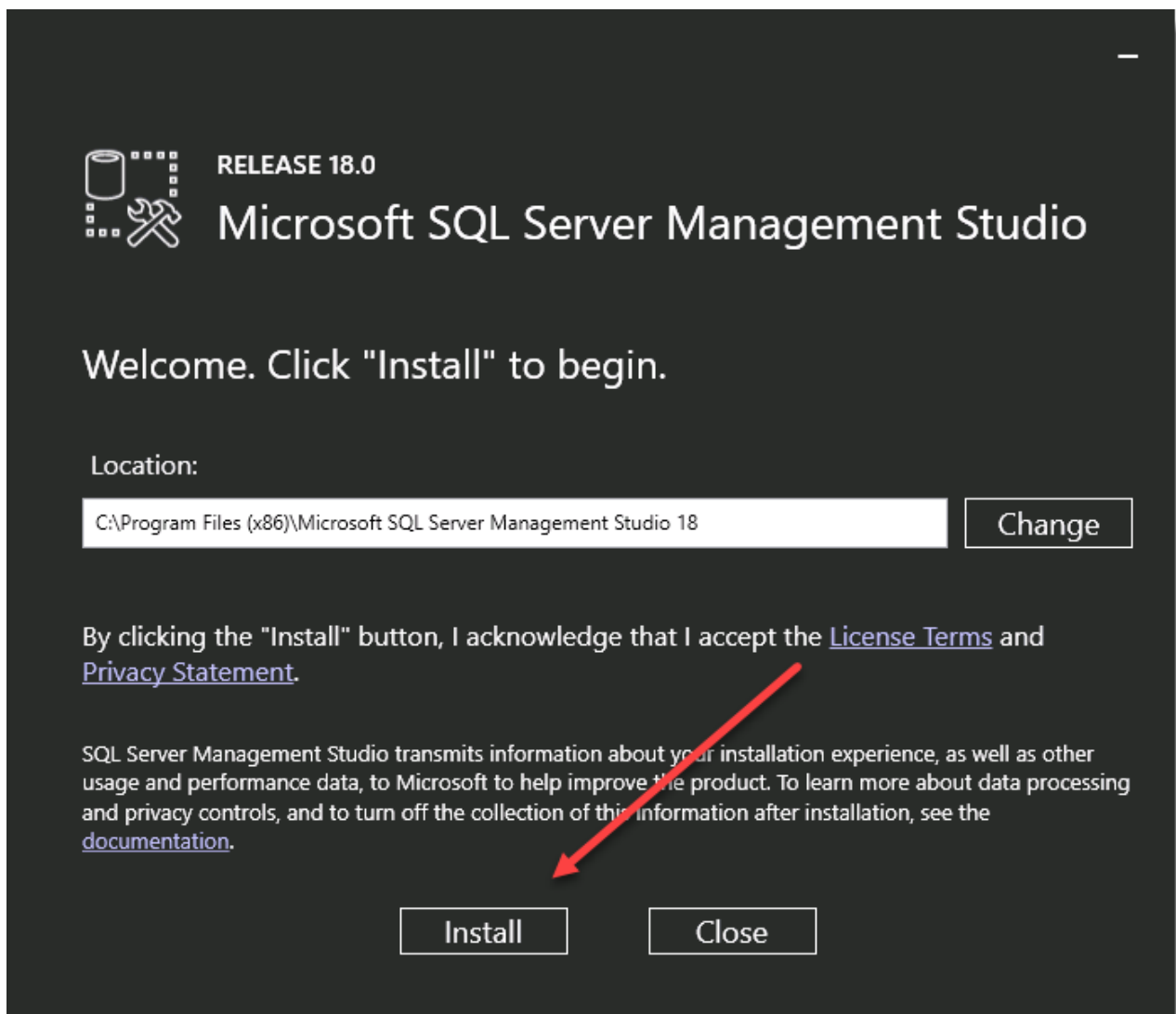
## Click Studios



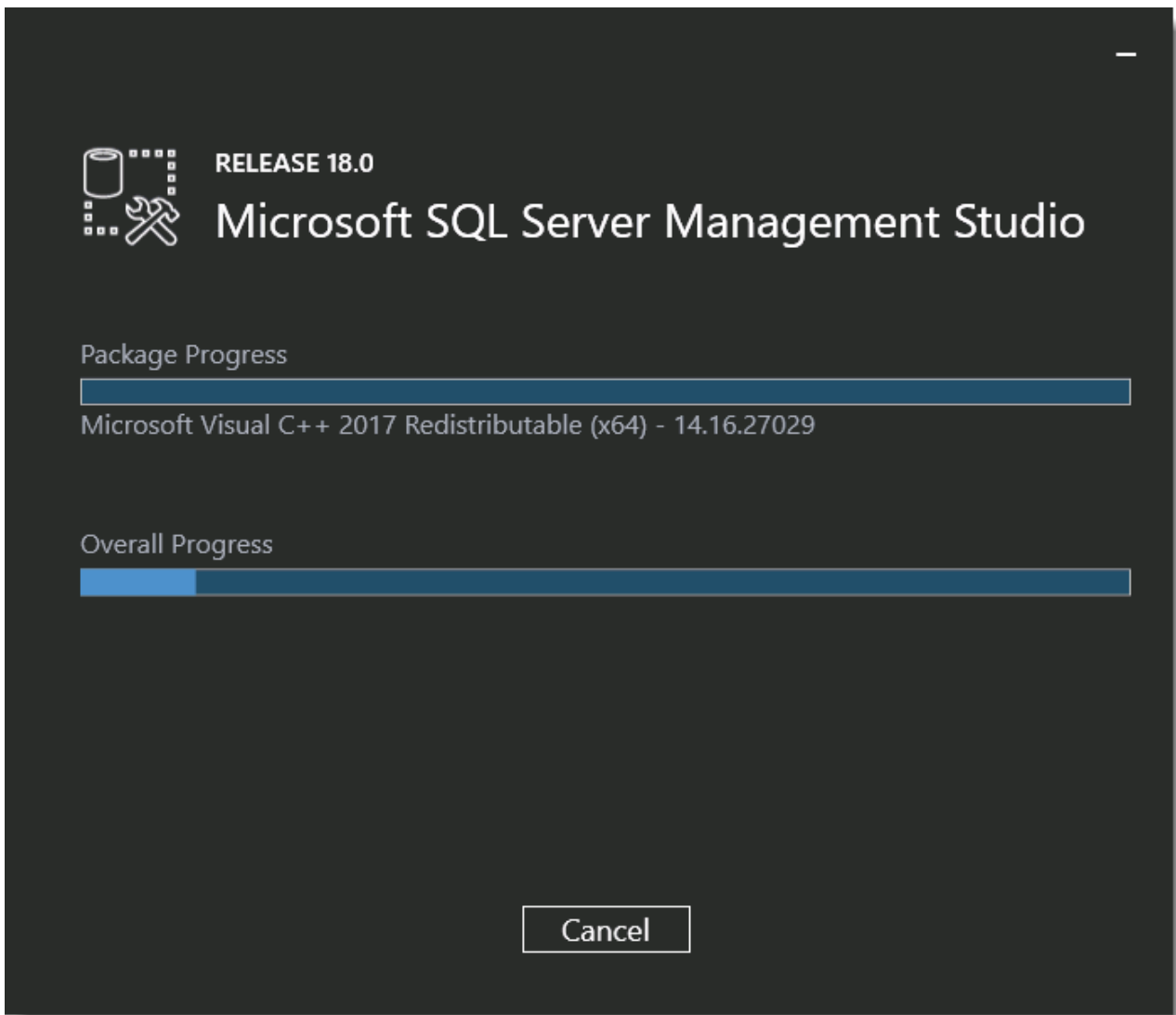
- A web page will launch, and you'll need to click the following download link (Name may change slightly compared to the below screenshot) and run the SSMS-Setup-ENU.exe file that is downloaded

The screenshot shows a web browser window displaying the Microsoft Docs page for downloading SQL Server Management Studio (SSMS). The page title is "Download SQL Server Management Studio (SSMS)". The URL is "https://docs.microsoft.com/en-us/sql/ssms/download-sql-server-management-studio-ssms?view=sql-server-2017". The page includes a navigation sidebar on the left with categories like "SQL Server 2017", "Distributed Replay", "SQL Server Configuration Manager", "SQLCMD", "SSB Diagnose", "SQL Server Data Tools (SSDT)", "SQL Server Management Studio (SSMS)", "Download SSMS", "Release Notes", "Overview", "Quickstarts", "Tutorials", "Concepts", "How-to", "References", "Resources", "SqlPackage.exe", "SQL Server Profiler", "Visual Studio native helpers", "Tutorials", "SQL Server on Linux", and "Download PDF". The main content area features a "Download SQL Server Management Studio (SSMS)" section with a date of "04/25/2019", a reading time of "4 minutes to read", and contributors. It lists applicable products: "SQL Server", "Azure SQL Database", "Azure SQL Data Warehouse", and "Parallel Data Warehouse". The text describes SSMS as an integrated environment for managing SQL infrastructure and provides instructions on how to use it. A "Download SSMS 18.0 (GA)" section highlights that the General Availability release is now available and provides a link to "Download SQL Server Management Studio 18.0 (GA)". A dialog box at the bottom asks "What do you want to do with SSMS-Setup-ENU.exe (524 MB)? From: download.microsoft.com" and offers "Run", "Save", and "Cancel" options. Red arrows point to the "Download SQL Server Management Studio 18.0 (GA)" link and the "Run" button.

- Click the Install button



- The SQL Management Studio Tools will now begin installing



- Click Restart to finish the install if required, otherwise the installation is complete



RELEASE 18.0

# Microsoft SQL Server Management Studio

Restart required in order to complete setup.

All specified components have been installed successfully.

The computer needs to be restarted before setup can continue.



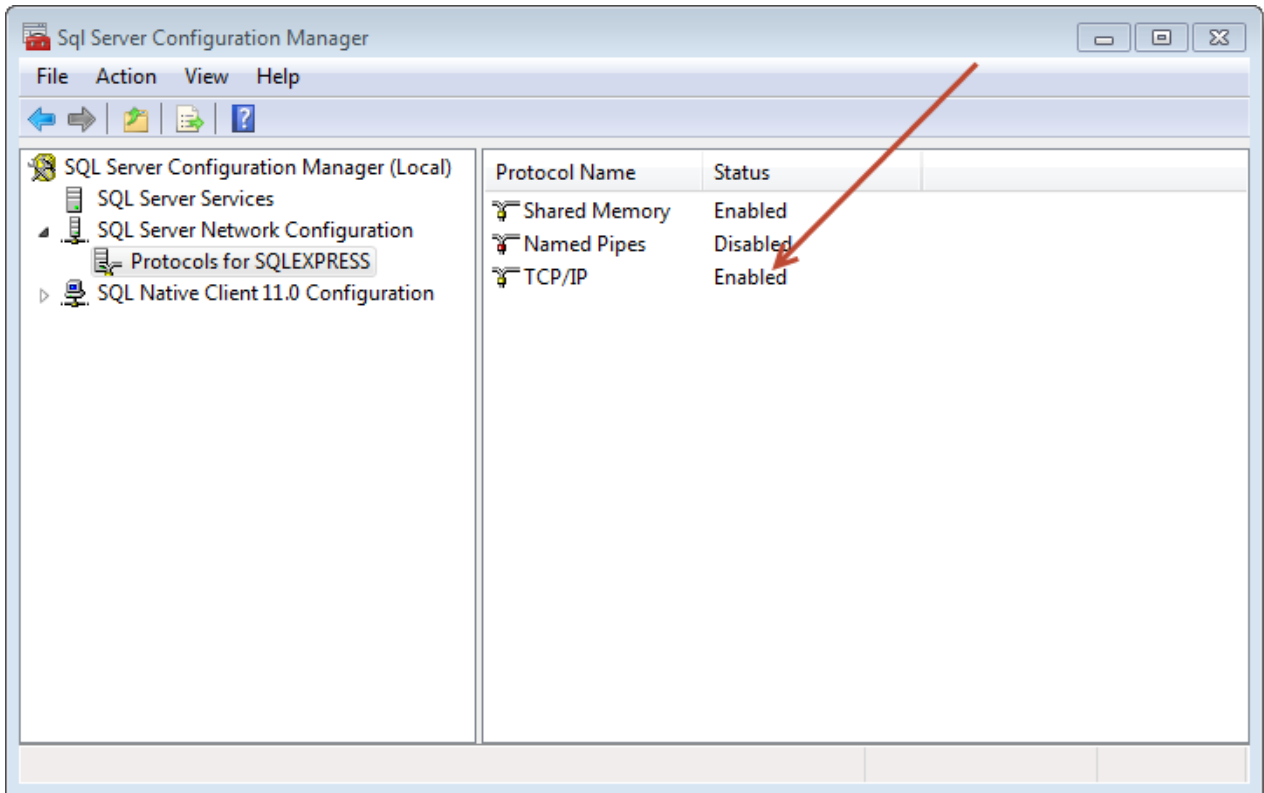
Restart

Close

## 2 SQL Server Express Considerations

If you intend to use SQL Server Express to host your Passwordstate database, please consider the following before installing Passwordstate:

1. If you're using SQL Server Express on a different server to where you installed Passwordstate, please ensure the TCP/IP Protocol is enabled (use SQL Server Configuration Manager -> SQL Server Network Configuration), and also the Windows Service 'SQL Server Browser' is set to 'Automatic' Startup Type and has been started. You will need to restart SQL Server Express after changing these settings



2. By default, SQL Server Express installs with an 'instance' name of SQLEXPRESS. When you're configuring Passwordstate for first time use, specifically the 'Database Settings' page, please ensure you have specified the name of the instance correctly i.e. HostName\SQLEXPRESS
3. If you intend to also install the High Availability instance of Passwordstate, SQL Server Express can only be used as the Subscriber for data replication, not the Publisher or Distribution database.
4. By default, SQL Express configures the TCP/IP Protocol to communicate on a dynamic port. If you have a firewall enabled on your database server, you may need to set a static port in the TCP/IP properties which will match your firewall rule. Restart the service again after configuring the option in the screenshot below:

