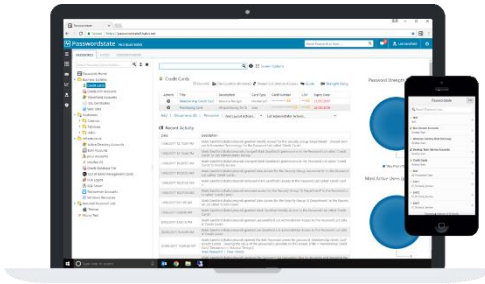




clickstudios PASSWORDSTATE

DURING A DISASTER THE LAST THING YOU NEED IS SEARCHING FOR PASSWORDS TO RECOVER SYSTEMS!



With Click Studios optional High Availability (HA) module for Passwordstate you can guarantee you'll always have access to your essential password resources.

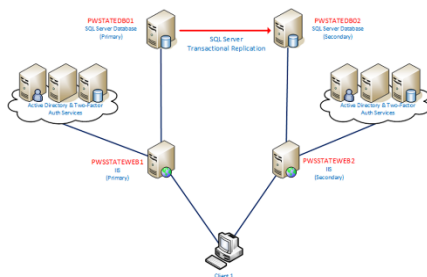
Provide your business with access to a read-only replica of your passwords with full auditing. For even greater levels of availability configure your HA implementation in Active/Active Mode.

Empowering more than 170,000 Security and IT Professionals globally, Click Studios Passwordstate is the web-based solution for Enterprise Password Management.

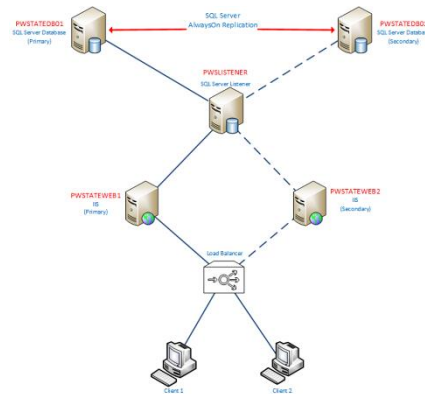
HA Module Overview

The Passwordstate HA module provides a read-only replica of your production installation in an Active/Passive configuration by default.

This allows users to perform all normal operations within Passwordstate except those that modify data. It's designed to provide access to view your passwords in the event your production installation becomes unavailable. Even though this replica is read only, full auditing of access is recorded locally and replicated back to the primary server once it's available again.



Active / Passive Configuration



Active / Active Configuration

When configured in Active/Active mode users can update data in both web site instances of Passwordstate. This architecture requires a Load Balancer to monitor the availability of the Passwordstate web servers and automatically fail over if one cannot be communicated with.

Microsoft SQL Server Basic Availability, SQL Clustering and Always On High Availability Groups are used to monitor availability of both SQL Server instances, and perform automatic failover in the event where one server becomes unavailable.